

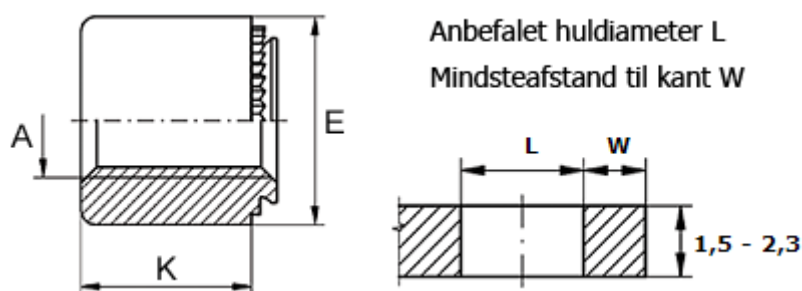
# Data Sheet



Article number: 12503800040100

Description: KLEE-coil 503 800 040.100  
M4 Hardened, zinc-pl. & chr. yellow

## Measures



Female thread A	= M4
Height K	= 3
Min distance to edge	= 4.0
Outer diameter E	= 8
Plate thickness	= 0.8 to 1.0
Recommended bore diameter +0.05	= 5.00